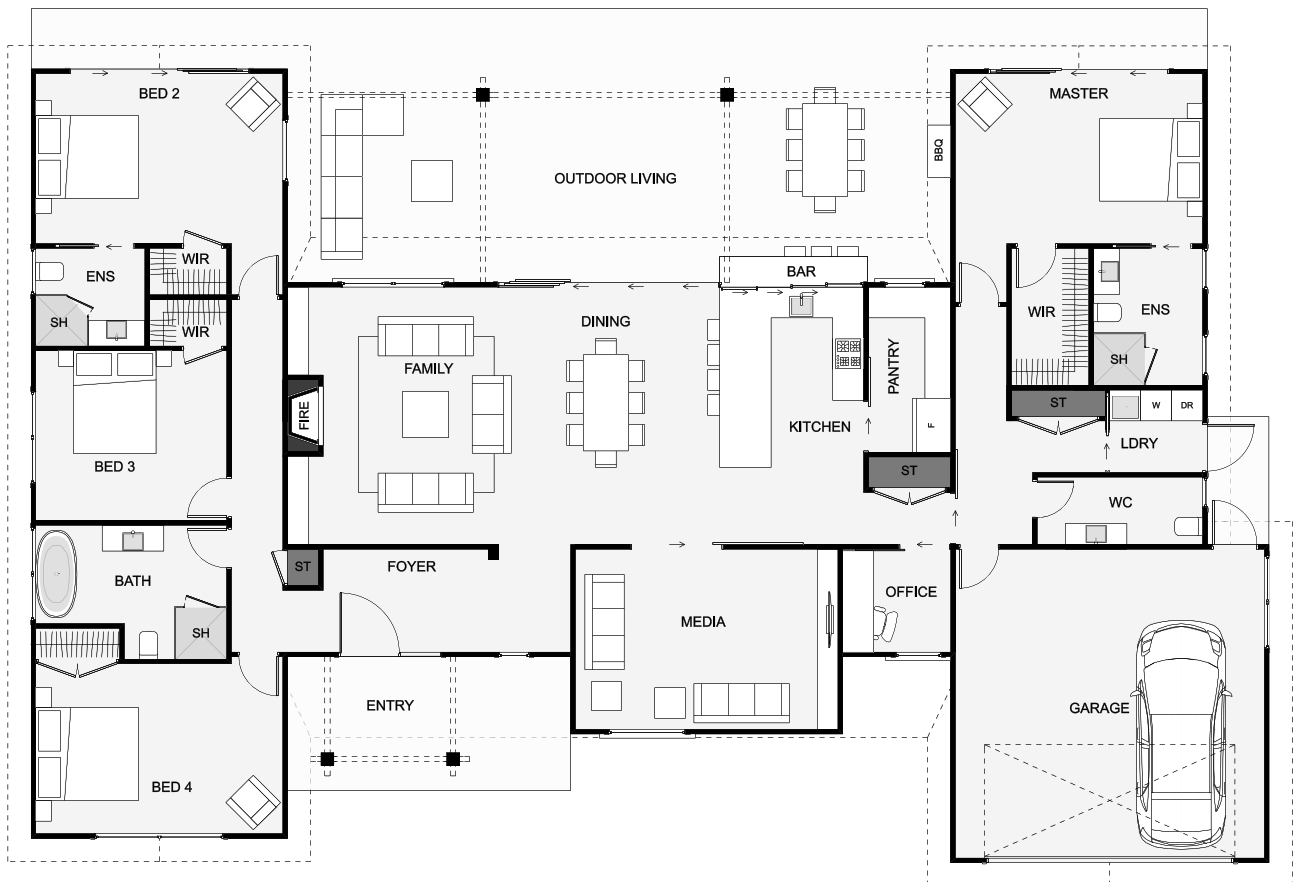




Inside this home, you'll discover an open-plan living and dining area that continues out to the alfresco area with outdoor dining and a bar. A master suite at one end of the home and a secondary master suite at the opposite, both with built-in wardrobes and ensuites. This stunning home will provide your family with all the elements you would expect for a superior lifestyle!



Floor Area: 260m<sup>2</sup>

 2
  4+
  2
  2
  22.8m
  15.4m

Contact us:

Ph: 0800 34 66 39

E: [sales@emphasishomes.co.nz](mailto:sales@emphasishomes.co.nz)

[www.emphasishomes.co.nz](http://www.emphasishomes.co.nz)

